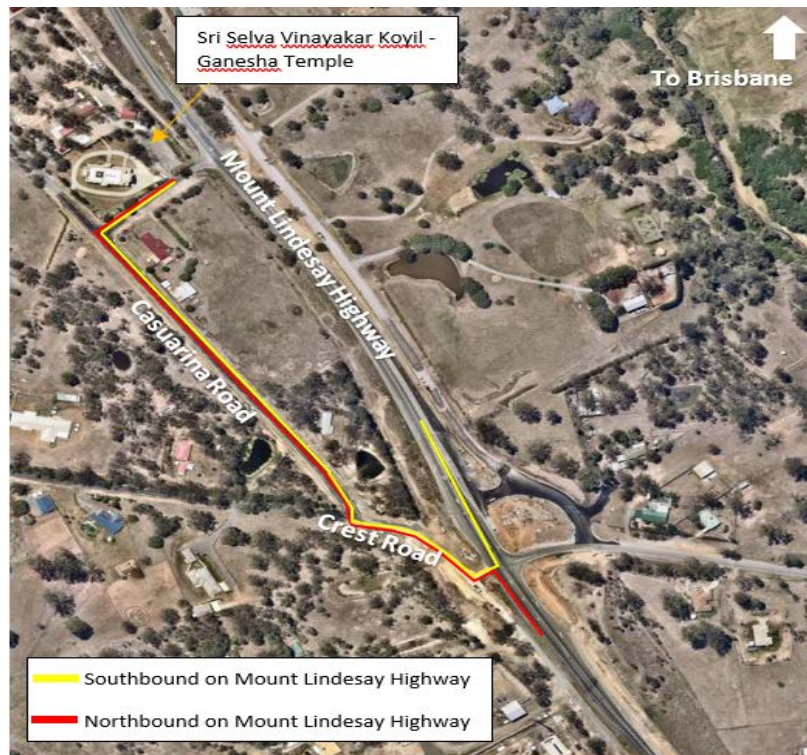


Sri Selva Vinayakar Koyil (Ganesh Temple) 4915-4923 Mount Lindesay Hwy, South Maclean, Qld 4280

Notice to devotees on Closure of direct access to Casuarina Road from Mt Lindesay Highway or direct entry to Mt Lindesay Hwy from Casuarina Road

As part of Mt Lindesay Highway upgrade works in the vicinity of Sri Selva Vinayakar Koyil, **access to Casuarina Road (local road next to the temple) from Mt Lindesay Highway as well as direct entry to Mt Lindesay Hwy from Casuarina Road have been closed permanently effective from 12th December 2019.** In future, all devotees must use the Crest Road intersection (approx. 400m South of Temple) and the service road to access the temple. Please refer to below map and instructions on the new arrangement of temple access.

Parking and walking on highways are prohibited in Queensland and devotees are reminded to follow the new arrangement to access the temple.



To access to the Sri Selva Vinayakar Koyil (Ganesh Temple):

*For vehicles travelling **south bound**, from Brisbane, Browns Plains, Logan Motorway etc:*

- Follow signage for Jimboomba/Beaudesert on the Mount Lindesay Highway.
- Once you travel on the bridge over the Logan River and past Tully Memorial Park, you are almost there.
- Turn right onto Crest Road and follow it around to the right.
- Turn right into Casuarina Road and continue along, the temple will be on your right

*For vehicles travelling **north bound**, from Jimboomba, Beaudesert etc:*

- Follow the signs towards Brisbane on the Mount Lindesay Highway.
- Once you start to see signs for roadworks and the speed limit is reduce to 60 kilometres per hour, you are almost there.
- Travel past Hinds Road (on your left), then take the next Left onto Crest Road, follow it around to the right.
- Turn right into Casuarina Road and continue along, the temple will be on your right.

Or Alternatively, turn Left onto Hinds Rd and go through to the service rd to Crest Rd (See below map below)

