

**Sri Selvavinayakar Temple (Ganesha Temple) 4915-4923
Mt Lindesay Hwy (MLH), South Maclean, Old 4280
Notice to devotees on changed traffic/parking arrangements
Between 6th and 16th April 2018 – Annual Thiruvizha Festival.**

Due to anticipated influx of large number of devotees during **annual festival**, restricted and changed traffic and parking arrangements are planned in compliance with **legal requirements for the safety of devotees and other road users. Traffic Control with reduced speed on the Mt Lindesay Highway (MLH) is planned to be implemented** at least for three days (14/04/18, 15/04/18 & 16/04/18). Please note the arrangements during this festival season.

During festival season, devotees are requested to take careful note of the changed conditions and plan their trip accordingly to and from the Temple for the safety of everyone.

Please follow the **Dos** and **Don'ts** as enumerated below :

✗ Don'ts

- No right turn into Casuarina Street (Temple Street) from Mt Lindesay Highway (when travelling from Brisbane side).
- Do not park at spaces marked by red on Casuarina Street.
- On exit from Temple, no right turn on to Mt Lindesay Highway.
- Strictly no queuing, parking and walking/crossing on the Highway.

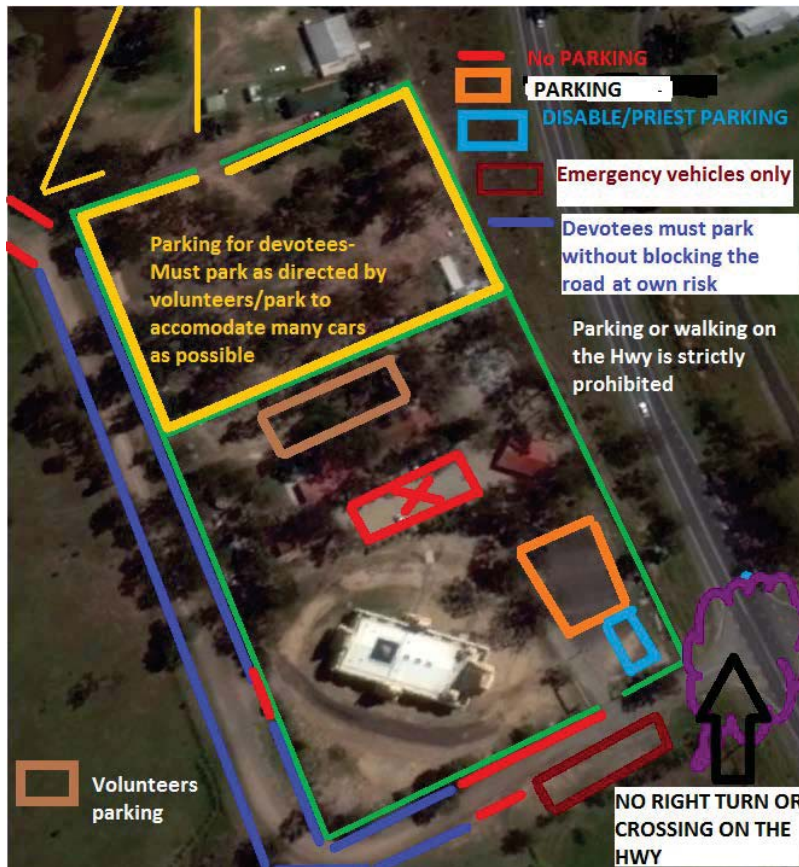
✓ Dos

- Please follow the traffic signs and directions from traffic wardens/volunteers on duty.
- Always turn left into and out of Casuarina Street (Temple Street).
- Coming from Brisbane, you may take a U-turn at traffic lights, refer to attached map for details and familiarize before commencing the trip (Refer to Map 2 below).
- Allow extra time for additional drive to take a U turn.
- For more parking please proceed along Casuarina Street to the rear of the Temple as indicated on the satellite map (Refer to Map 1 below).

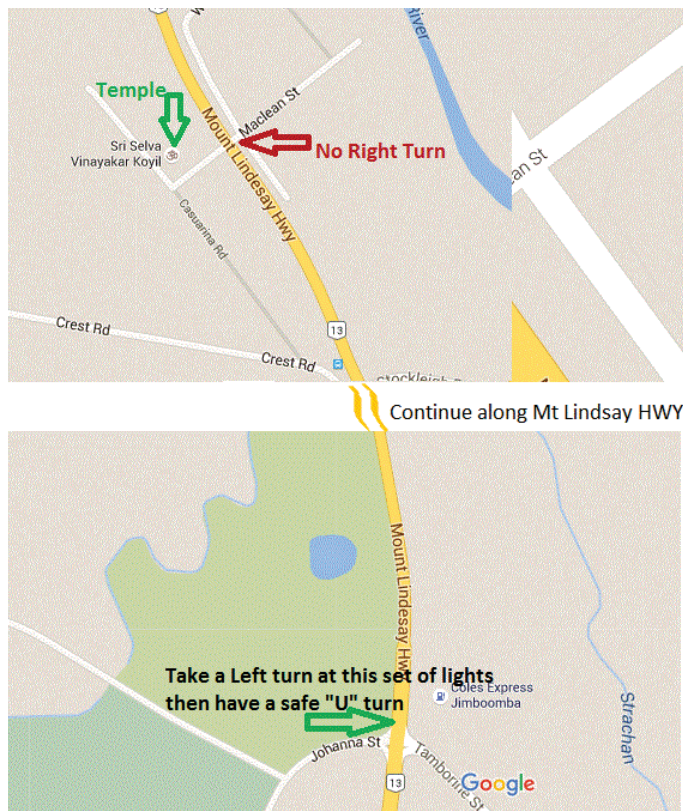
N. B

It is always safe to **follow the Map 2** above whenever situation become difficult to turn right in Casuarina Street (CS) and demand long waiting time at the intersection of MLH and CS.

NB: Devotees are kindly requested to follow the direction by traffic controllers/volunteers and drive to the condition on the road. To ensure safety of everyone, the committee may refer to authorities for any unsafe behaviors. Any vehicles parked outside of marked areas may be towed away at owner's expense.



Map 1: Temple Parking Arrangement



Map 2: Proposed Detour Route for devotees from Brisbane