

**Sri Selvavinayakar Temple (Ganesha Temple) 4915-4923 Mt  
Lindesay Hwy (MLH), South Maclean, Qld 4280**  
**Notice to devotees on changed traffic/parking arrangements**  
**On 13<sup>th</sup> Sep 2018(Evening) – Vinayaka Chaturthi**

Due to anticipated influx of large number of devotees on Thursday the 13<sup>th</sup> Sep 2018 (Evening), restricted and changed traffic and parking arrangements are planned in compliance with **legal requirements for the safety of devotees and other road users.** **Devotees are kindly requested NOT to take right turn or crossing the Hwy at the intersection of Temple road and Mt Lindesay Hwy. Front entrance to the temple is restricted to disable parking and limited parking for others in the sealed area in front of the temple. Drivers are urged to park at designated places and follow the direction from volunteers.**

Devotees are requested to take careful note of the changed conditions and plan their trip accordingly to and from the Temple for the safety of everyone.

Please follow the **Do's** and **Don'ts** as enumerated below:

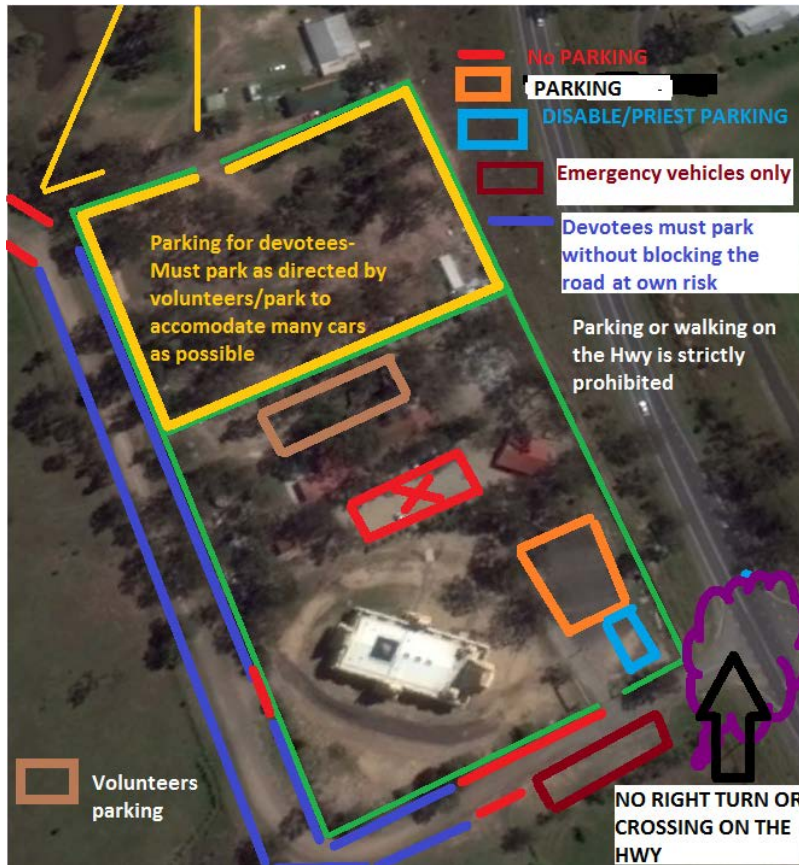
### **✗ Don'ts**

- No right turn into Casuarina Street (Temple Street) from Mt Lindesay Highway (when travelling from Brisbane side).
- Do not park at spaces marked by red on Casuarina Street.
- On exit from Temple, no right turn on to Mt Lindesay Highway.
- Strictly no queuing, parking and walking/crossing on the Highway.

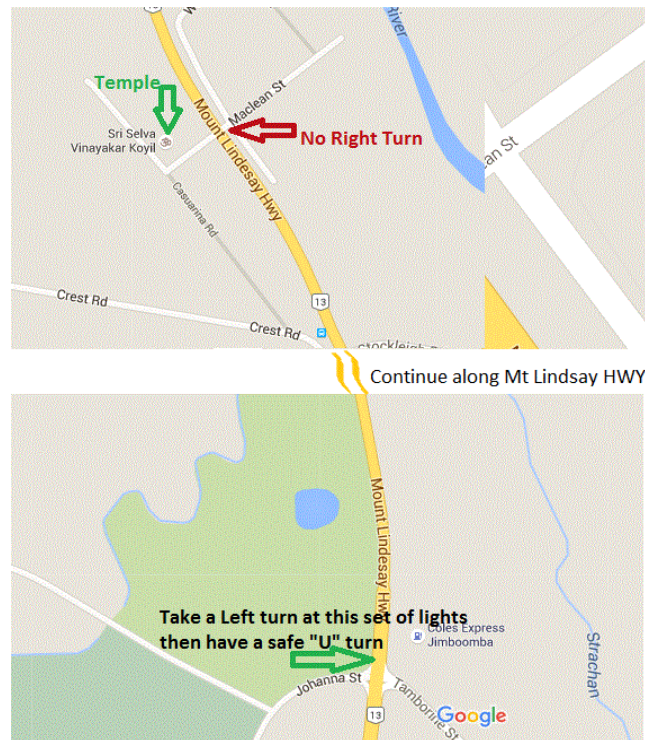
### **✓ Do's**

- Please follow the traffic signs and directions from traffic wardens/volunteers on duty.
- Always turn left into and out of Casuarina Street (Temple Street).
- Coming from Brisbane, you proceed towards Beaudesert and take a U-turn at safe location, refer to attached map for details and familiarize yourself before commencing the trip (Refer to Map 2 below).
- Allow extra time for additional drive to take U turn.
- For parking please proceed along Casuarina Street to the rear of the Temple as indicated on the satellite map (Refer to Map 1 below).

NB: Devotees are kindly requested to follow the direction by traffic controllers/volunteers and drive to the condition on the road. To ensure safety of everyone, the committee may refer to authorities for any unsafe behaviors. Any vehicles parked outside of marked areas may be towed away at owner's expense.



Map 1: Temple Parking Arrangement



Map 2: Proposed Detour Route for devotees from Brisbane